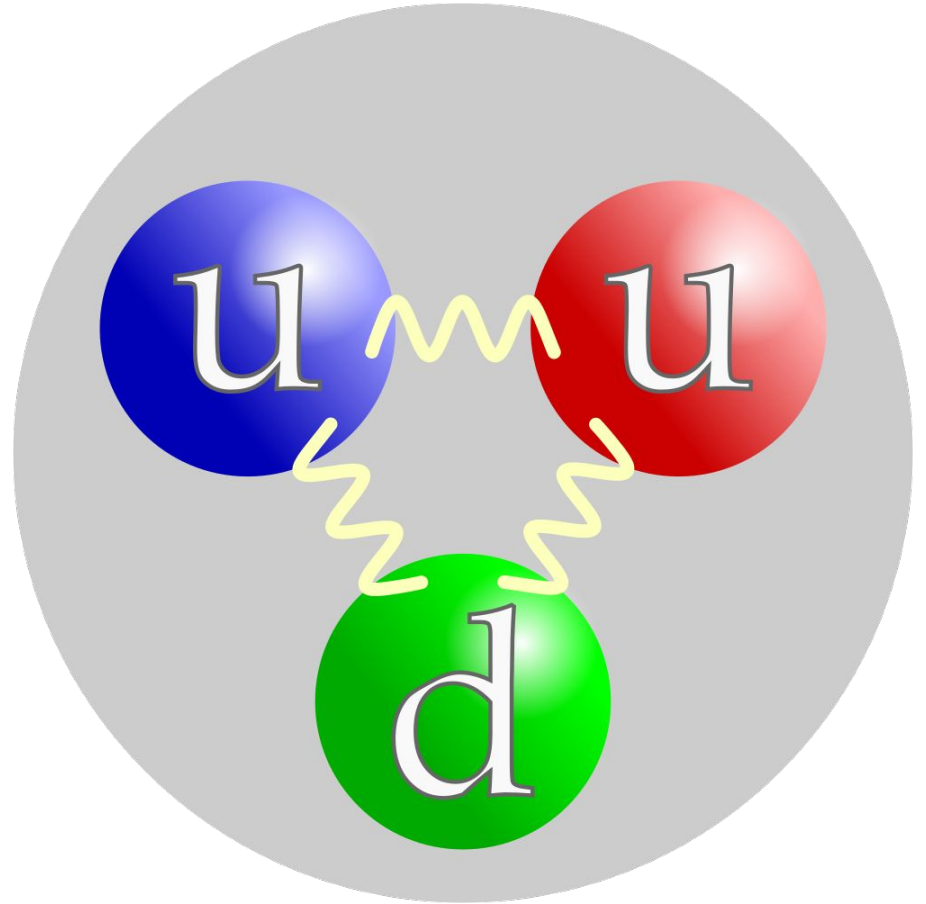
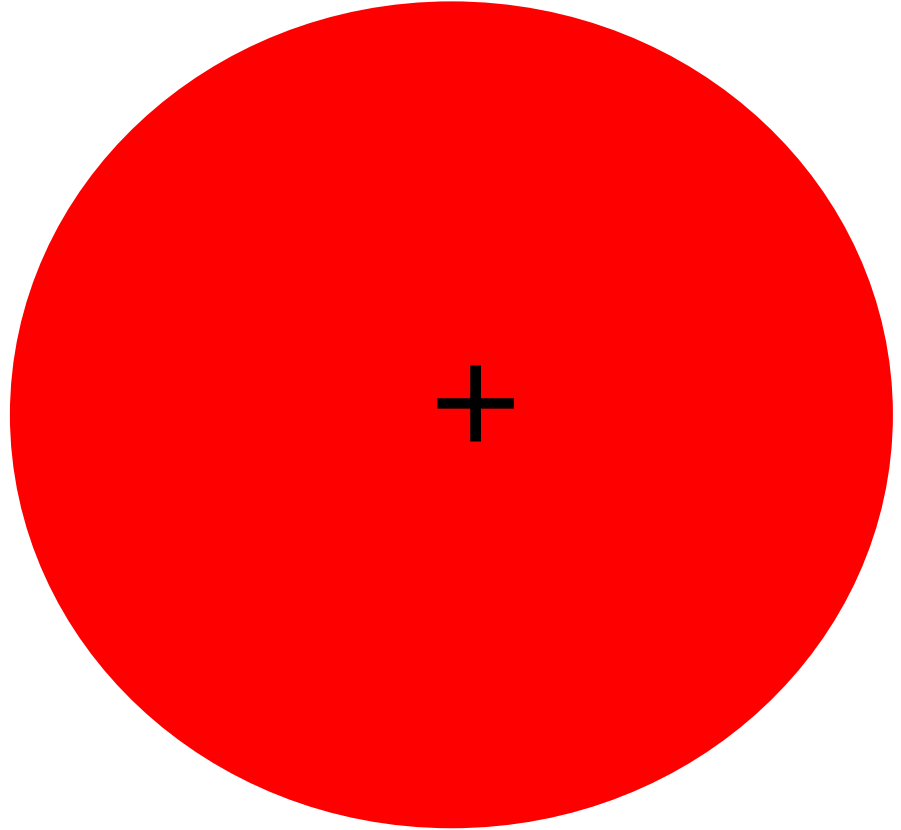


**PLANCK LENGTH**

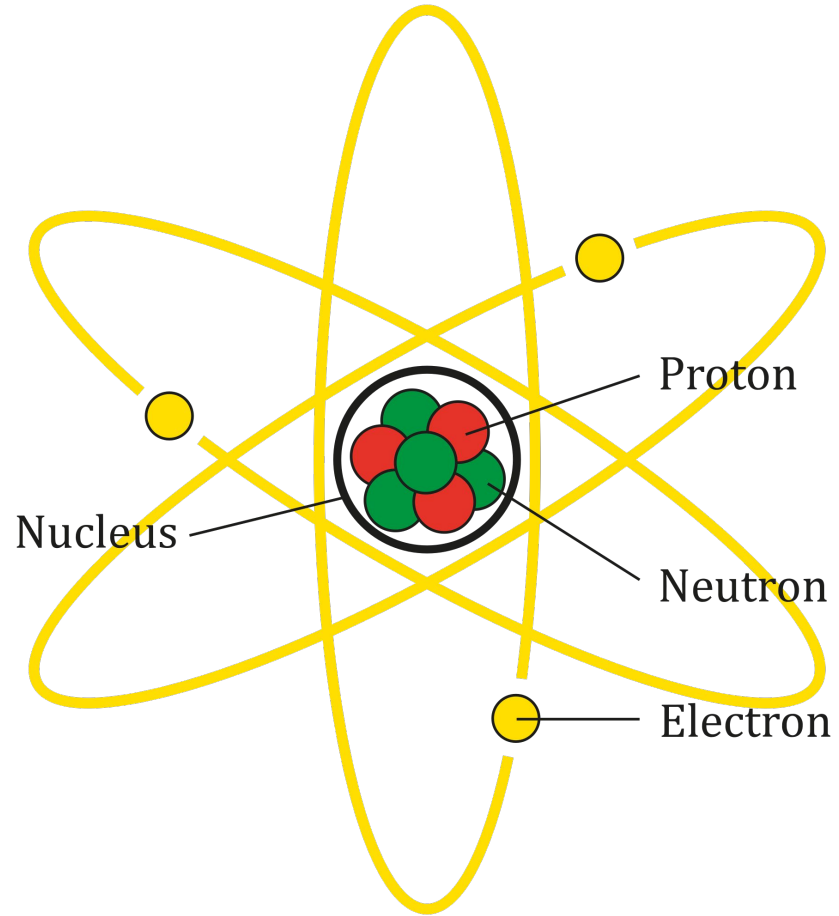
# QUARK



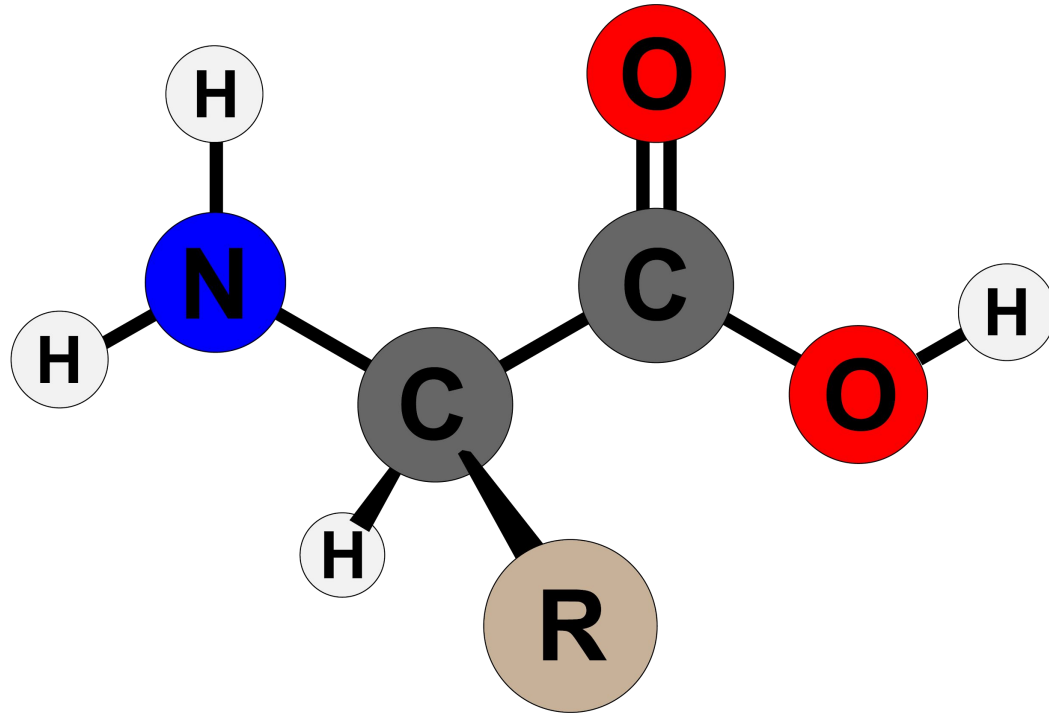
PROTON



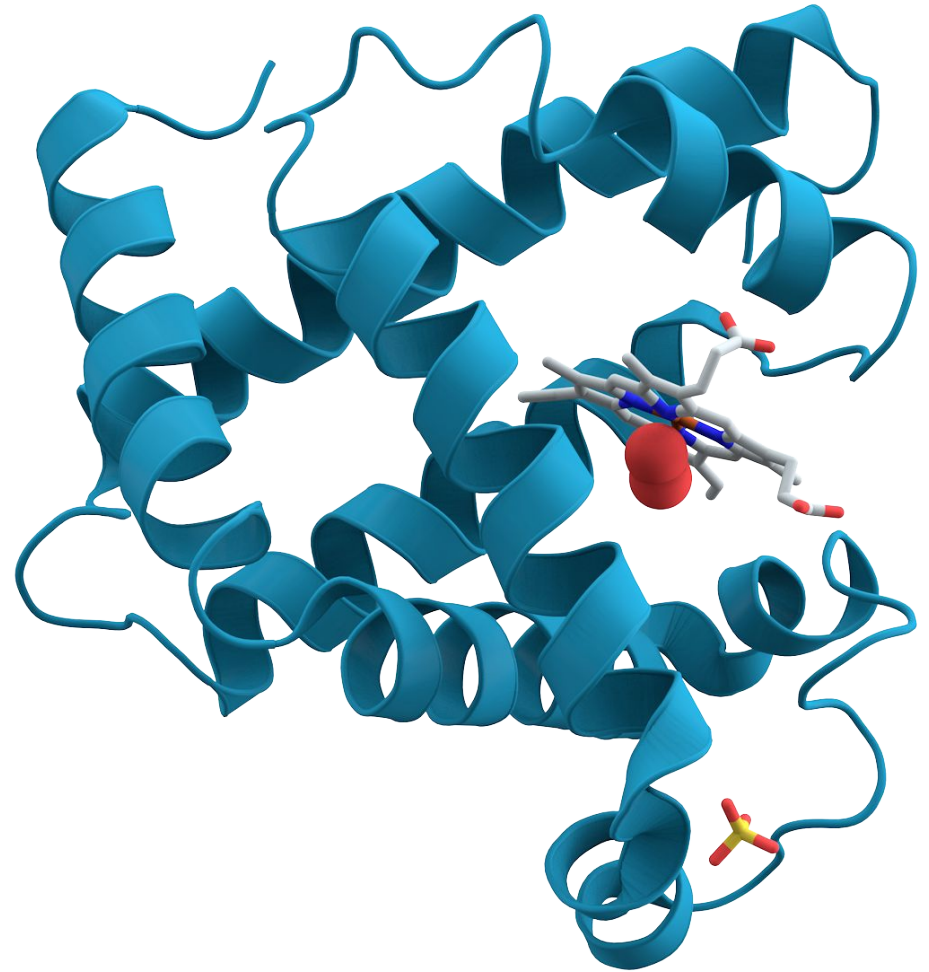
# ATOM



# AMINO ACID



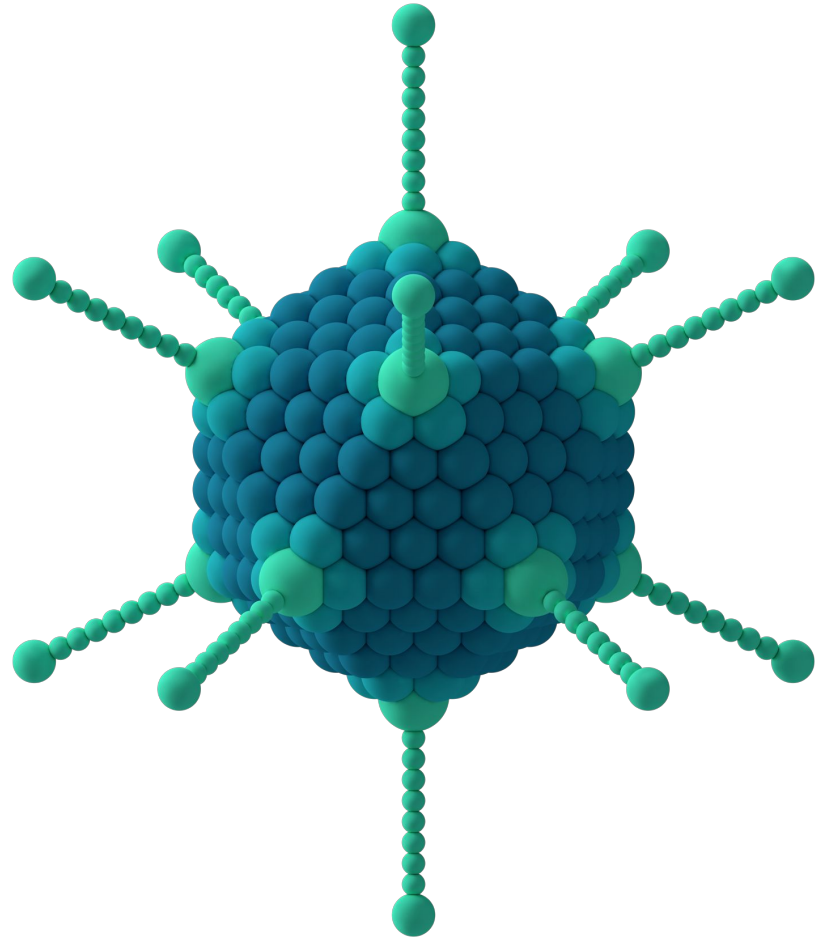
# PROTEIN



Public domain

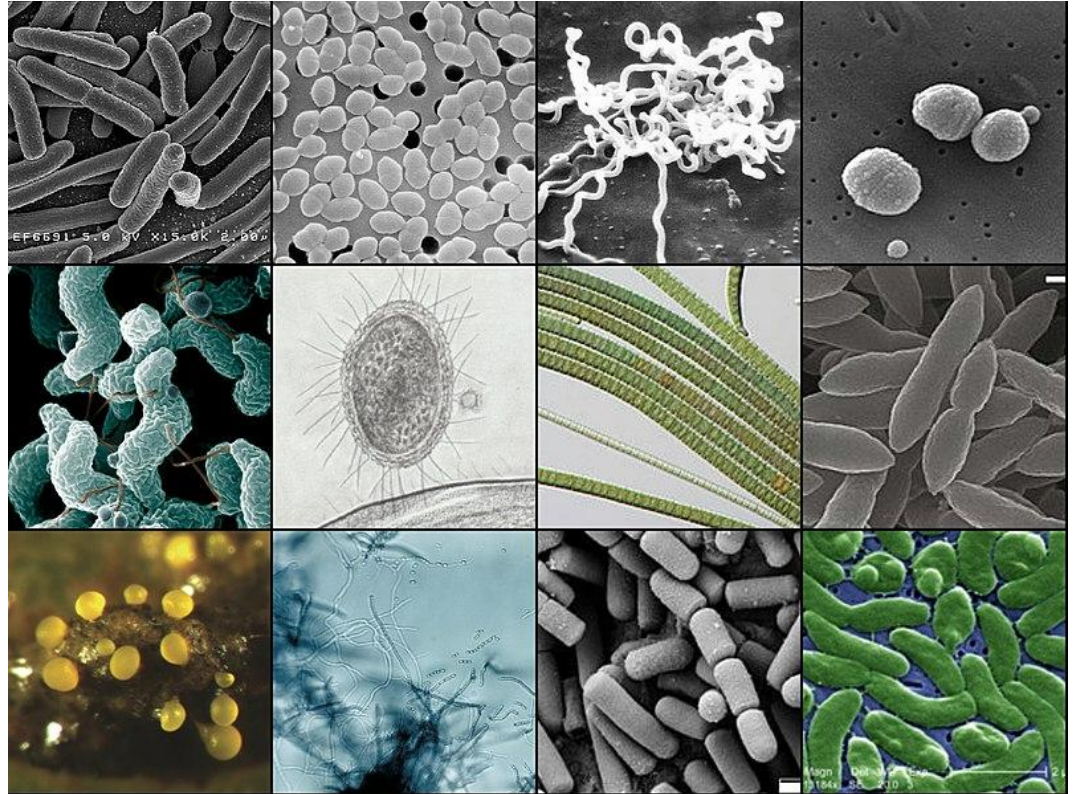
Caption: The structure of a protein. This work is in the public domain.

# VIRUS



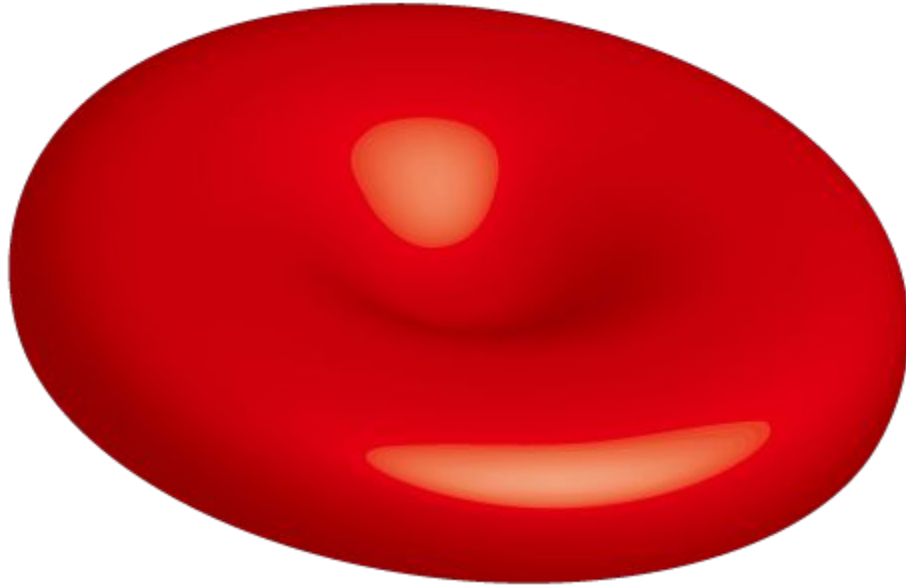
Caption: The structure of an adenovirus, which causes the common cold. Author: Thomas Spletstoesser. This work is licensed under the [Creative Commons Attribution-Share Alike 4.0 International](https://creativecommons.org/licenses/by-sa/4.0/) license.

# BACTERIA

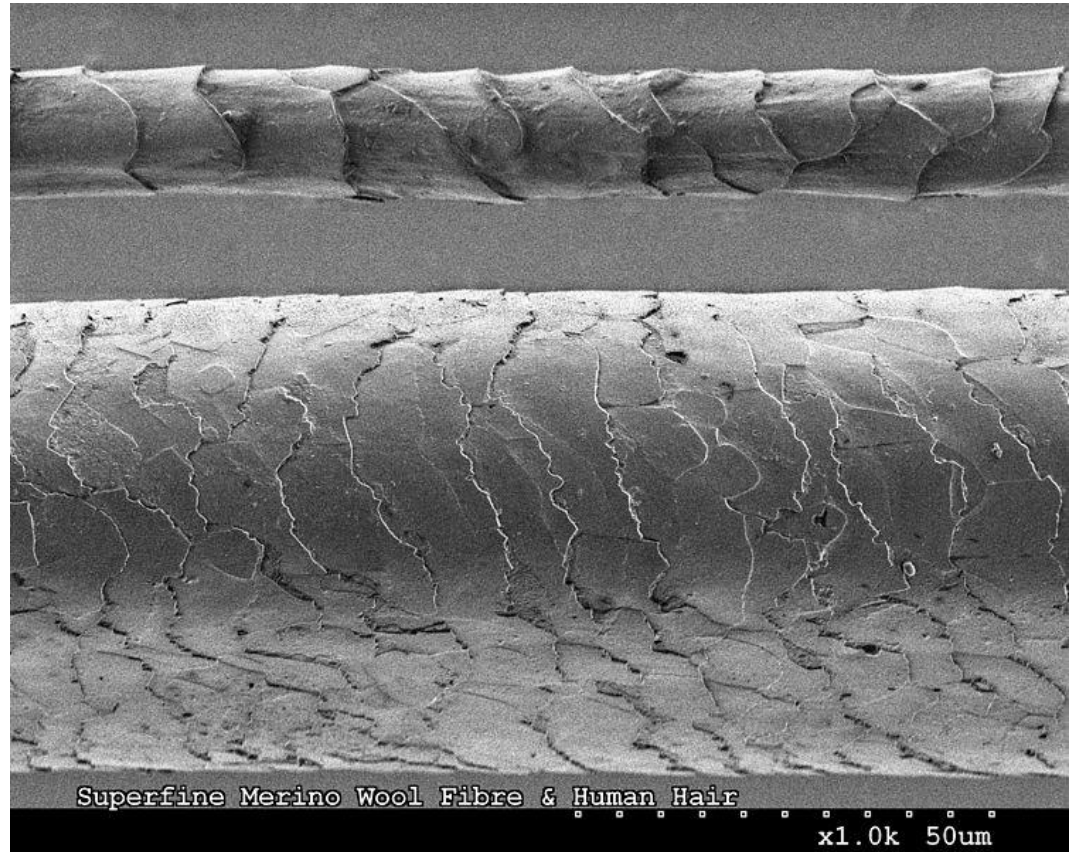




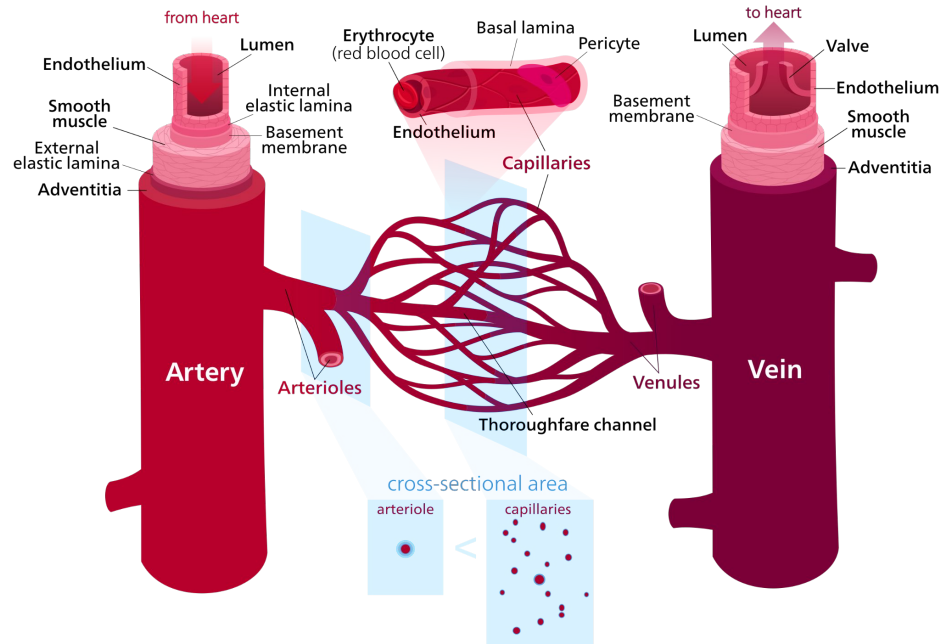
# RED BLOOD CELL



# HAIR



# BLOOD VESSEL



# APPLE

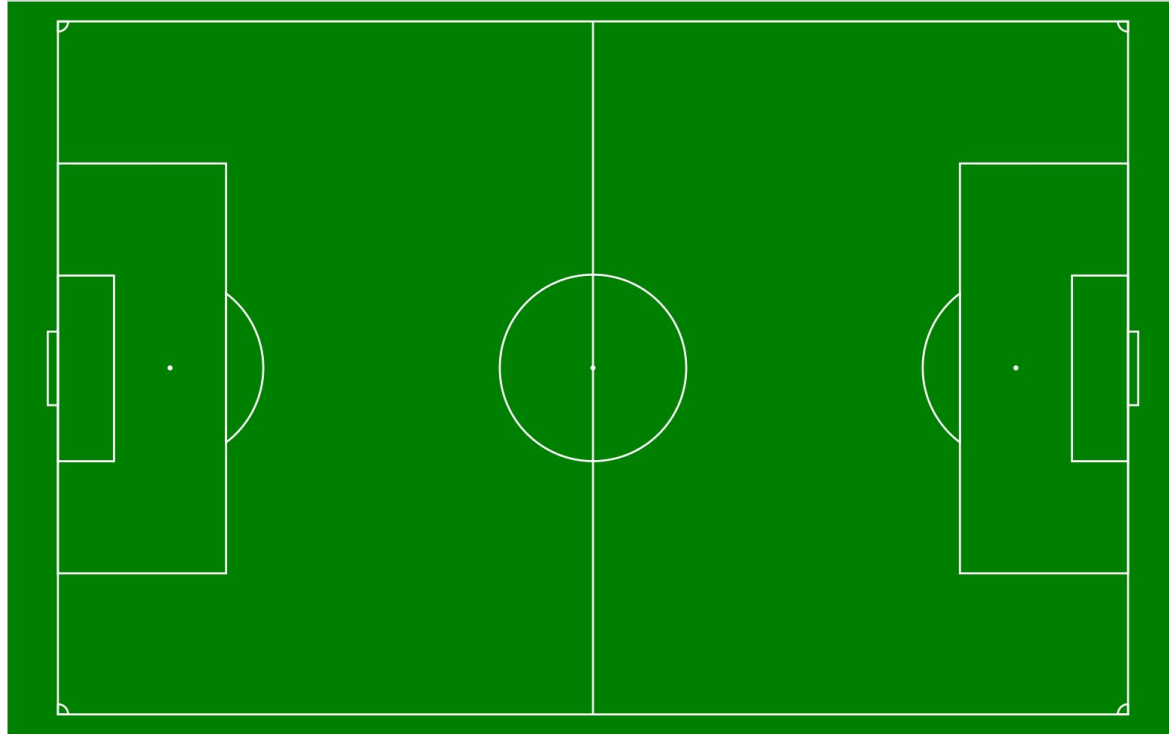


# HUMAN



Caption: An image of a Dagestani man and woman taken between 1905 and 1915. This work is in the public domain.

# SOCCER FIELD



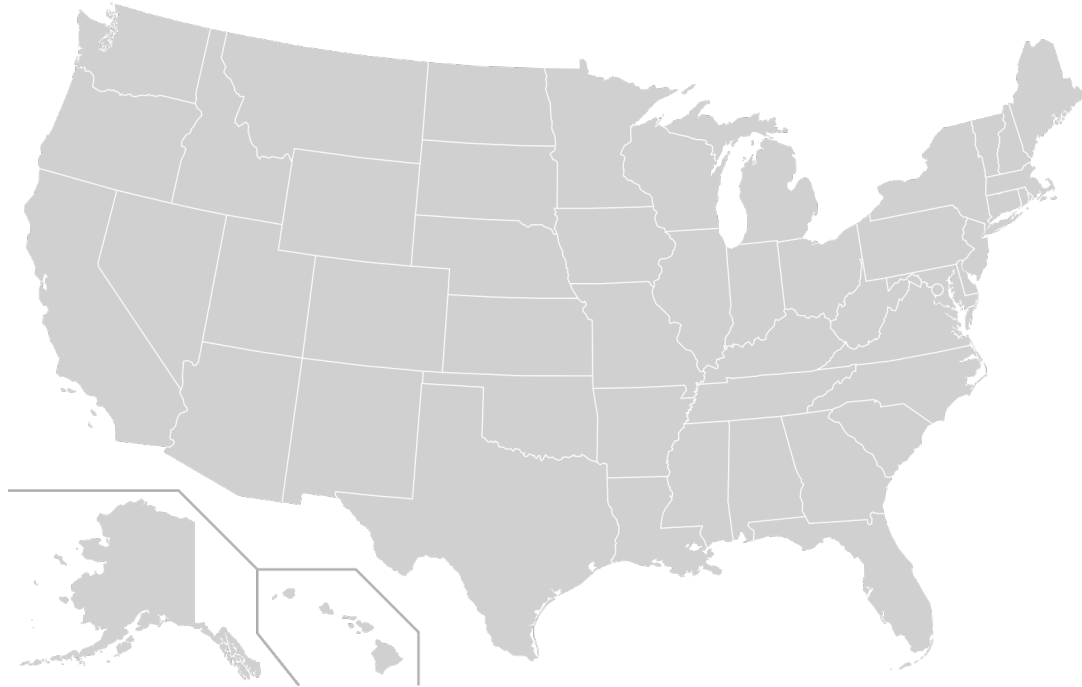


# TACOMA



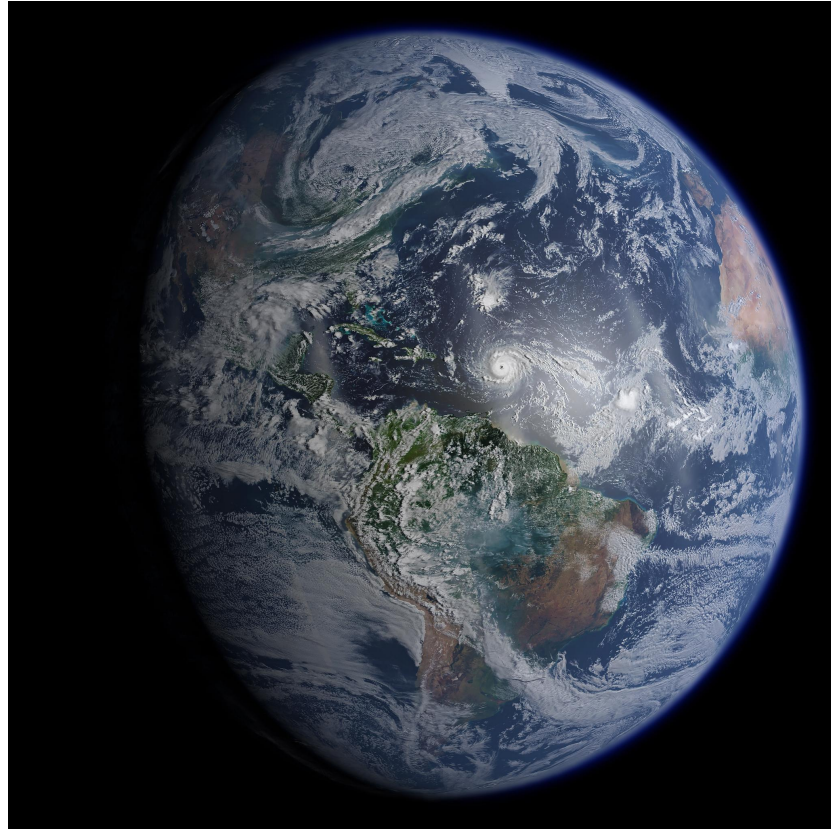
Caption: A photograph of the city of Tacoma. Author: Wikipedia User SounderBruce. This work is licensed under the [Creative Commons Attribution-Share Alike 2.0 Generic](https://creativecommons.org/licenses/by-sa/2.0/) license.

# UNITED STATES

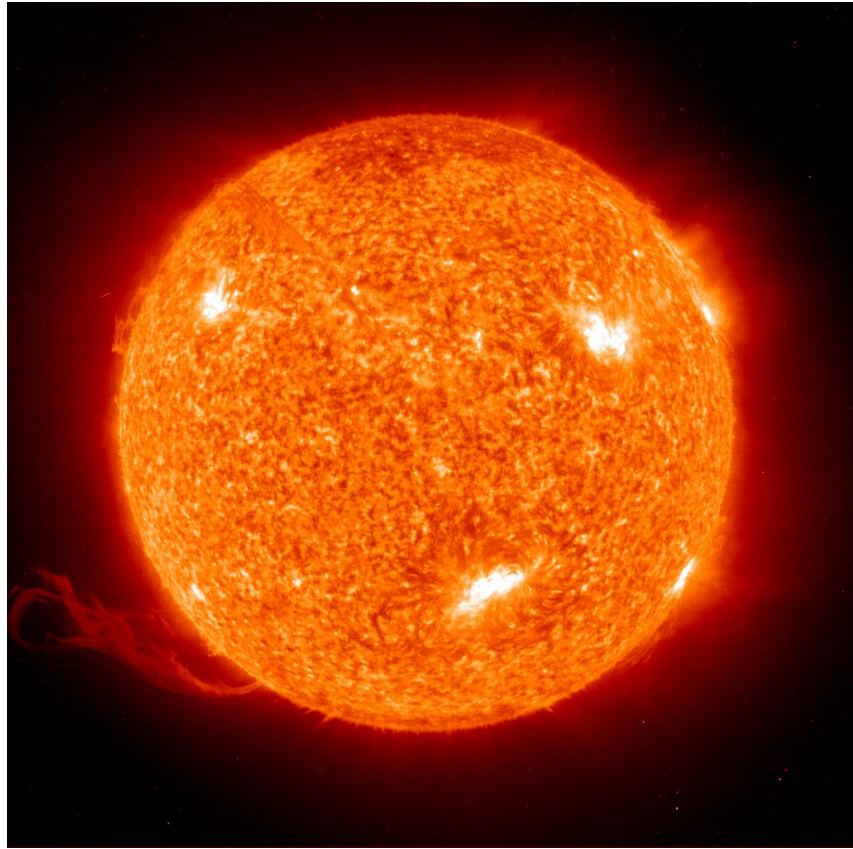




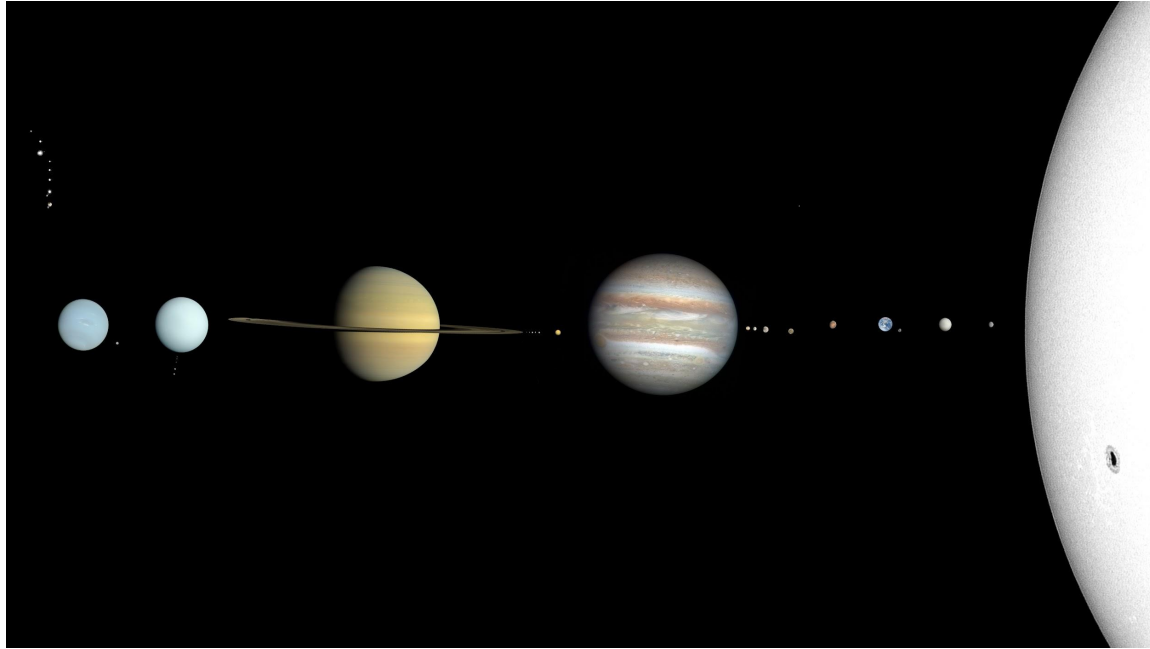
# EARTH



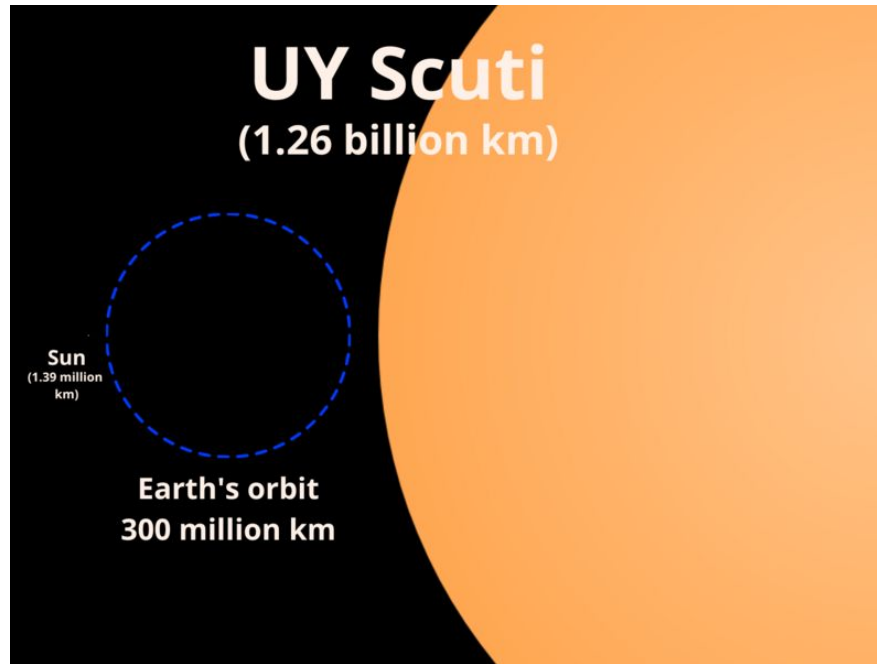
# SUN



# SOLAR SYSTEM



# UY SCUTI (STAR)



# GLOBULAR CLUSTER





# DWARF GALAXY

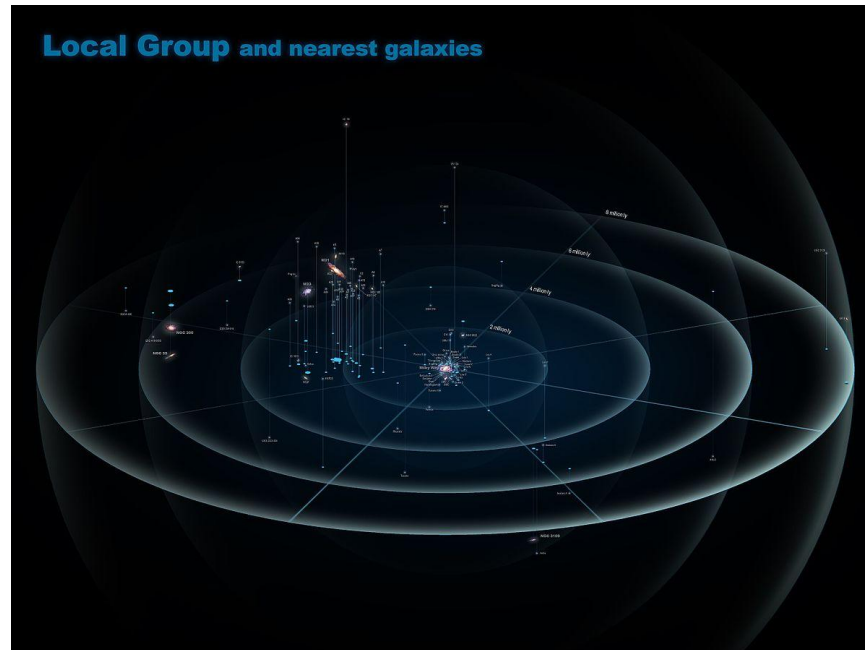


# MILKY WAY GALAXY



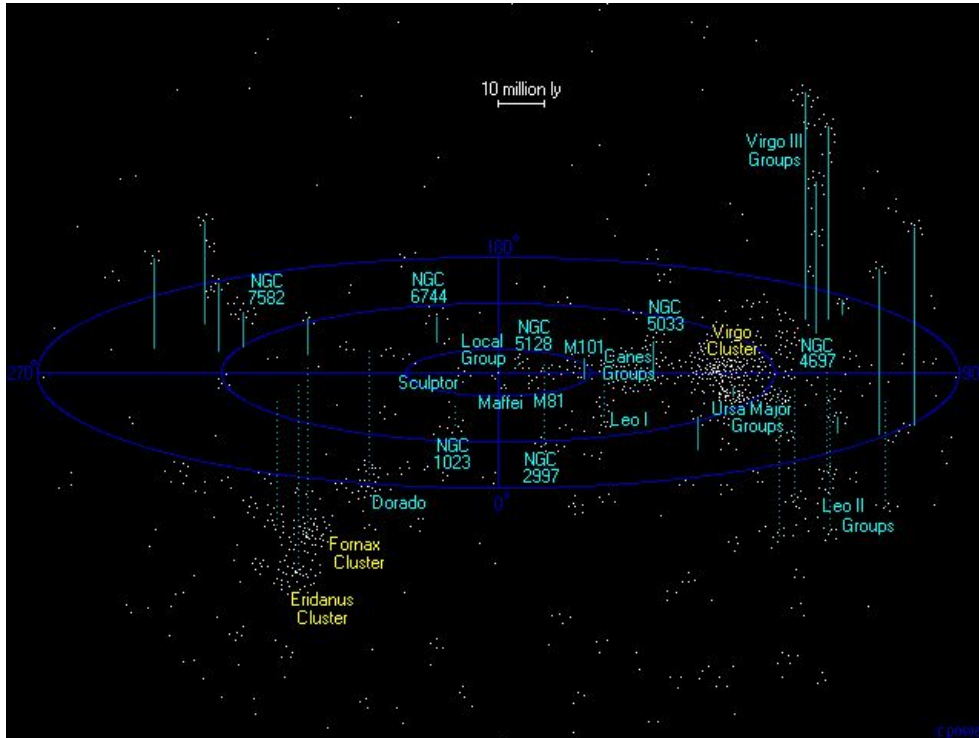
Caption: A visual of the Milky Way galaxy from above. This work is in the public domain.

# LOCAL GROUP





# VIRGO SUPERCLUSTER

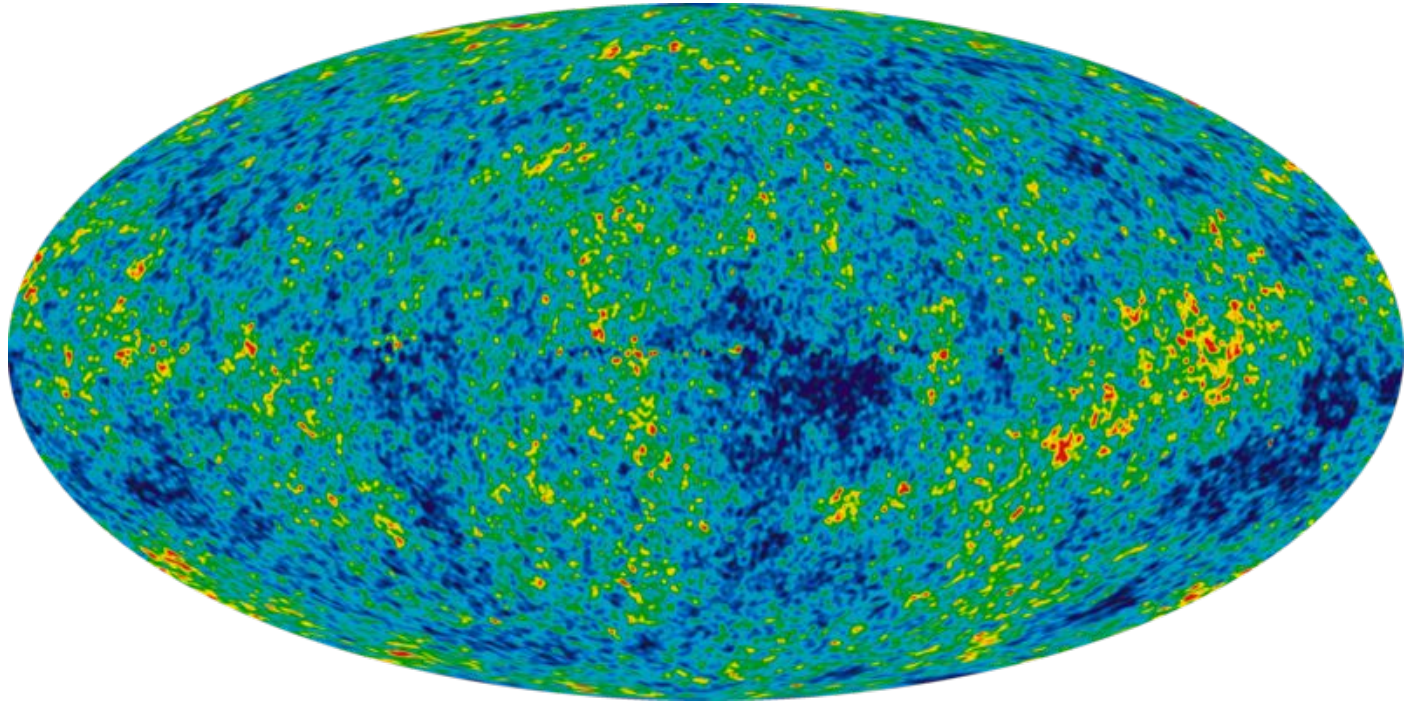


# HERCULES-CORONA BOREALIS GREAT WALL



Caption: A visual of a group of galactic superclusters. Author: NASA, ESA, Harald Ebeling (University of Hawaii at Manoa) & Jean-Paul Kneib (LAM). This work is licensed under the [Creative Commons Attribution 3.0 Unported](https://creativecommons.org/licenses/by/3.0/) license.

# OBSERVABLE UNIVERSE



Caption: WMAP image of background cosmic radiation (2012) taken by the NASA/WMAP Science Team. This work is in the public domain.